



TRUFIG

212 Avenida Fabricante
San Clemente, CA 92672
(949) 492 - 7777

TRUFIG and the TRUFIG Logo
are trademarks of Dana In-
novations. © 2012 Dana In-
novations. All rights reserved.

APPLICATION NOTE

G-02

Plaster Install

Overview:

This application note will give instructions on how to prepare a TRUFIG mounting platform for plaster finish. The process of preparing a mounting platform for plaster install falls into two different categories: 1) single and double gang enclosures, & 2) touch panels and HVAC vents.

Below are detailed setup instructions and required materials for both applications.

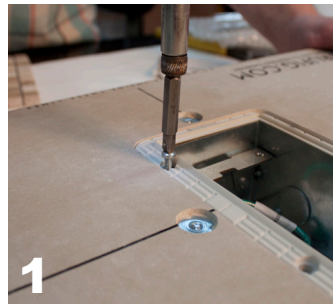
Single and Double Gang Enclosures:

TRUFIG parts needed:

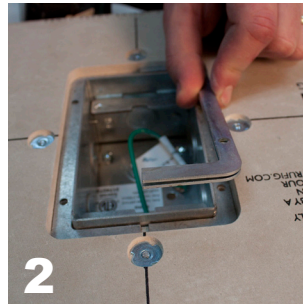
- TRUFIG Gypsum Mounting Platform (single or double gang, 1/2" or 5/8")
- Plaster Shims (single or double gang)

Installation Instructions:

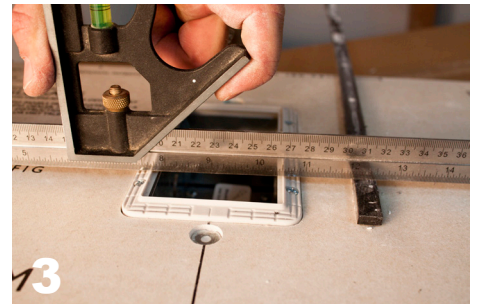
Notes: plaster shims are 1/16" thick. If longer screws are needed, any #6 pan head screw will work. Also, adding plaster shims can be done before or after the platform is installed.



1 Remove the mud dam from the mounting platform

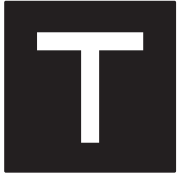


2 Install plaster shims



3 Lay in mud dam and refasten with 4 provided screws. Be sure to use a low torque setting when tightening the screws so that the mud dam does not get distorted. Check to make sure new mud dam height is correct before installing plaster.

The mounting platform is now ready for plaster to be applied. Apply plaster to area around TRUFIG platforms according to standard industry practices. Remember to keep area around the TRUFIG openings clean and flush with the mud dam as there will be no sanding to the plaster once it's dry.



TRUFIG

212 Avenida Fabricante
San Clemente, CA 92672
(949) 492 - 7777

TRUFIG and the TRUFIG Logo
are trademarks of Dana In-
novations. © 2012 Dana In-
novations. All rights reserved.

APPLICATION NOTE

G-02

All Touch Panels and HVAC Vents:

TRUFIG parts needed:

- TRUFIG Gypsum Mounting Platform (1/2" or 5/8")
- Plaster Shims (HVAC and Touch Panels)

Installation Instructions:

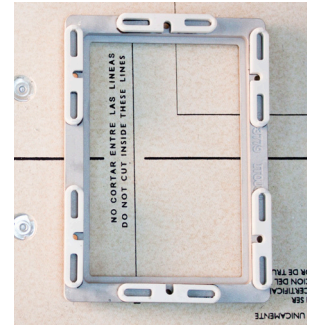
Notes: plaster shims are 1/16" thick. If longer screws are needed, any #6 pan head screw will work. Also, adding plaster shims can be done before or after the platform is installed.



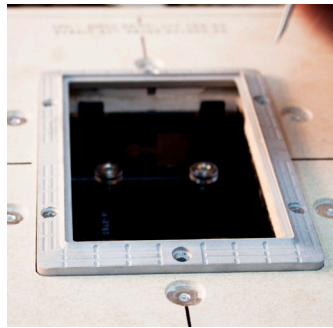
Remove the mud dam from the mounting platform



Peel red paper backing off base plaster shim and stack desired quantity on top of base shim



Adhere one stack of shims to each mud dam screw location



Lay in mud dam and refasten with provided screws. Be sure to use a low torque setting when tightening the screws so that the mud dam does not get distorted. Check to make sure new mud dam height is correct before installing plaster.

The mounting platform is now ready for plaster to be applied. Apply plaster to area around TRUFIG platforms according to standard industry practices. Remember to keep area around the TRUFIG openings clean and flush with the mud dam as there will be no sanding to the plaster once it's dry.